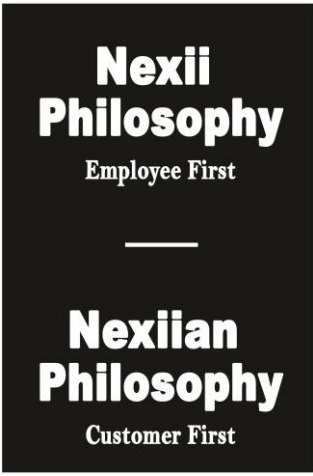
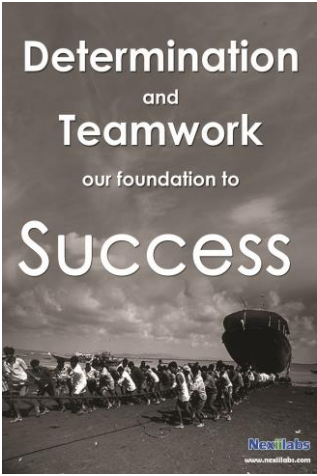




# About Nexiilabs



Acquired Ingenit IT Services in 2012.

## Certifications and Memberships

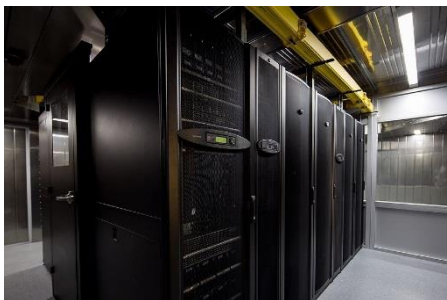


Nexiilabs is a proud member of International Standards. It is honored with the accreditation ISO 27001 and 9001:2008. The recognition is a proof to the security standards we implement for the assets like financial information, intellectual property, employee details and information entrusted to the company by a third party.

# Infrastructure

Nexiilabs is powered by state-of-the-art infrastructure situated at the largest Information Technology Park.

- Multi-level redundant network infrastructure.
- Stringent information security measures at various levels.
- Highly secured and restricted access to work areas.
- Effective and robust communication infrastructure.





# QE Practice



# QE Goal



**We share a common goal with our customers**

Builds a robust enterprise class product by providing high-class quality engineering services.

## 6 principles drive Quality Engineering @ Nexiilabs

**Don't test if you don't understand**

If you don't understand, you are not testing.

**Ask questions**

Ask right questions to open doors for better testing.

**Express your thoughts**

Don't hesitate to express your findings .

**Test smart**

Innovate ways to test better

**Debugging is the mantra**

Find the reason, not just the problem.

**Progressive learning**

Continuously learn to make your work interesting.



# Belief



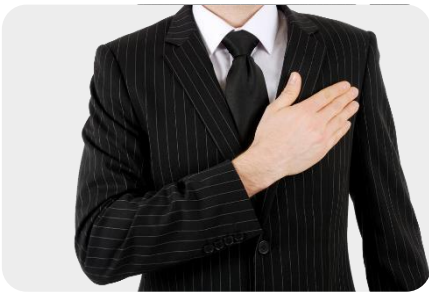
Nexiilabs strongly believes that QE business is a combination of engineering and art.



Quality work constitutes

- Test processes
- Test tools
- Test techniques
- Domain knowledge and
- Product acquaintance

# Quality Engineers' Oath



- As a team, we shall always think and strive to improve the quality of customer's product.
- We shall always test to find the bugs.
- We shall focus on improving our technical abilities.
- We shall share the knowledge with other team members.
- We shall always see customer at the top.

# QE Engagement Models



Complete  
Ownership

Extended  
Offshore Team

QE Center of  
Excellence

# Complete Ownership

Nexiilabs complete ownership model helps the customers focus on their other core engineering activities and business areas, while complete QE of the products is taken care of by Nexiilabs.

## Highlights



- Nexiilabs engages few engineers onsite at customer location for product discussion and coordinating the QE tasks.
- Number of engineers onsite vs. offshore is decided before the sign off.
- Nexiilabs takes complete ownership and responsibility of the product quality.
- Test planning, management, execution and reporting are taken care of by Nexiilabs QE leadership.
- KPIs are managed and reviewed on a quarterly basis.
- SLAs are discussed and defined between the project stakeholders and Nexiilabs QE leadership.
- Nexiilabs' QE also handles knowledge management.

# Extended Offshore Team

Few customers would want to have the control of the QE activities. This mode of operation is transformed to a complete ownership model upon building a healthy relationship.

- A team of engineers from Nexiilabs works on a project as an extension to the customer's team.
- Depending on the need, few engineers can work out of Customer's work location.
- Responsibility of training and learning of Nexiilians is with Nexiilabs.
- Project management is done by Nexiilabs.
- Key Performance Indicators (KPIs) are defined and implemented by Nexiilabs.





# Center of Excellence (CoE)

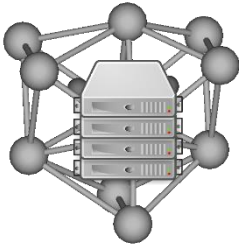
With the experience of building world-class QE organizations, Nexiilabs has developed a framework that aims to build a foolproof CoE with shortest turnaround time.



The framework defines a task-based model that divides the complete setup of activities into individual projects to accomplish:

- Hierarchy Setup and Management
- Setting up of IT Infrastructure
- Team Building and Resource Acquisition
- Risk Management
- Project and Program Management
- Metrics Management

# Storage Virtualization and Cloud



## Servers and Clustering Solutions

Linux  
Windows 2008 & 2012  
MSCS  
AIX  
ESXi  
ESX Clusters  
Veritas Cluster Services



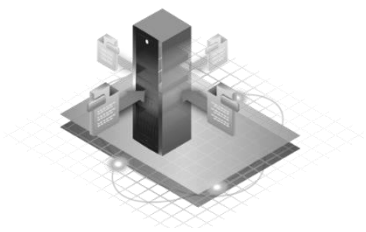
## Expertise in Storage Infrastructure and Applications

DMX  
VMAX  
VNX  
VNXe  
EVA  
Brocade  
CISCO MDS  
Power  
PowerPath  
MPIO



## Technologies

Copies  
Snapshots  
Replication  
Data Migrations  
Provisioning  
DE Duplication  
Backups



## Expertise in Virtualization Platforms

VMware  
vSphere  
XenServer  
Hyper-V



# Expertise in Different Cloud Environments

## Public Clouds

Amazon AWS,  
Rackspace,  
IBM SmartCloud, HP  
Cloud, Google

## Private Clouds

OpenStack and  
Eucalyptus

## Cloud Storage Platforms

VMware  
Microsoft Hyper-V  
Citrix Xen  
EC2 (Amazon Web  
Services)  
IBM SmartCloud  
Rackspace Cloud

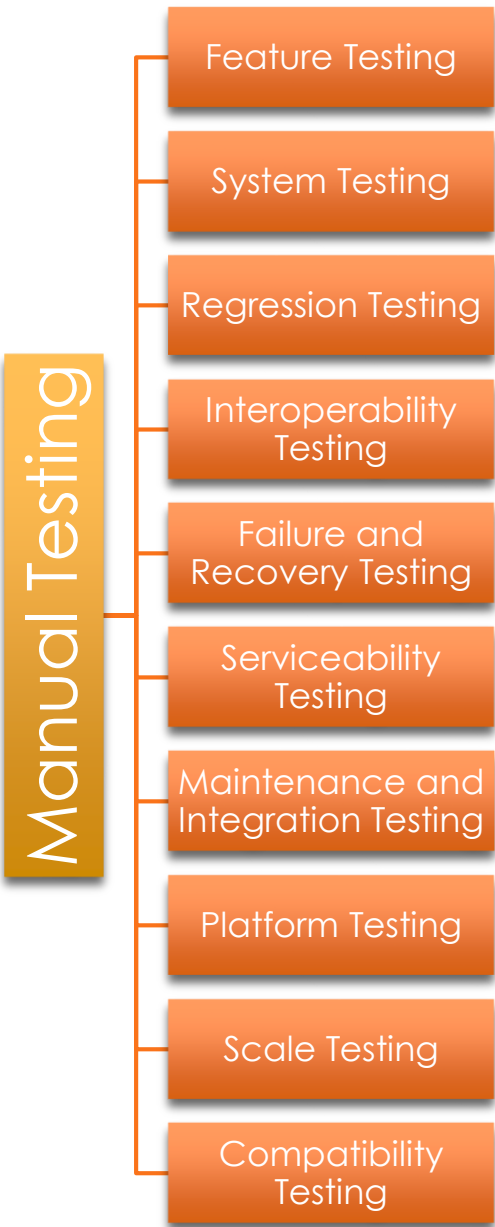


- **Test Strategy Development:** We develop clearly articulated plan that determines the scale of the project. This well-thought plan helps the team to take into account all the activities related to the testing process.
- **Quality Consulting:** We have a robust consulting team that helps the business to improve testing processes and deliver capabilities. The team makes a risk-based, measurable and sustainable improvement roadmap that aligns well with the client's business objectives.
- **Quality Planning:** We develop a meticulous plan that describes the quality objectives and specifies the quality assurance and control activities to be performed on a day-to-day basis.
- **Test Management:** We organize and control the processes and artifacts required for efficient and thorough testing. This enables the testing team to plan, execute and assess all testing activities within the overall software testing framework.
- **Test Execution:** In this phase, we identify the defects and document the test case results to track and manage the test progress until all the planned tests are completed.

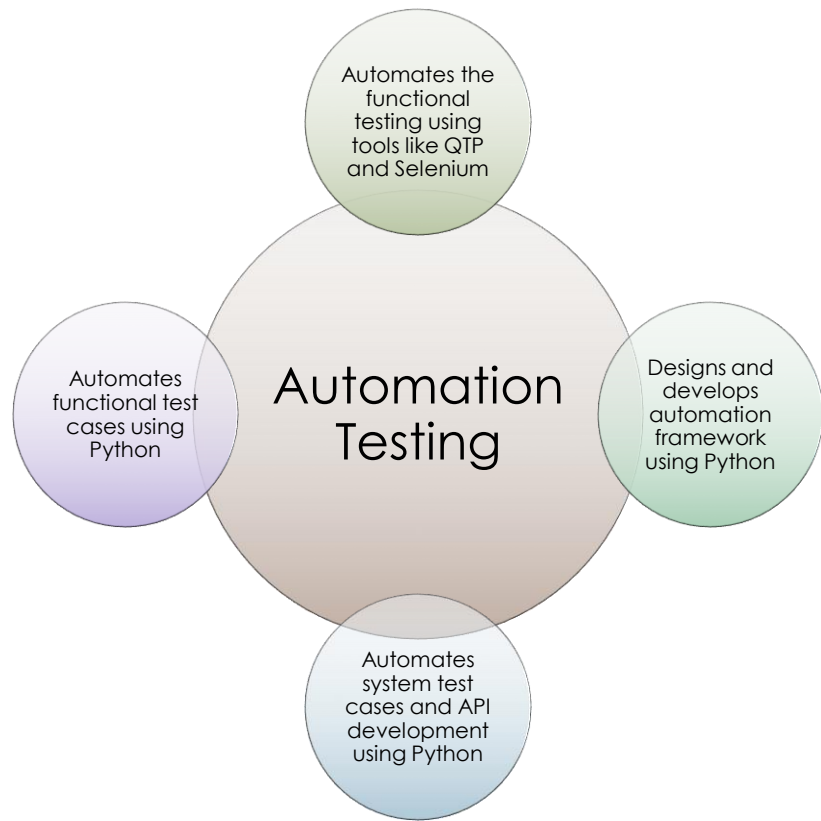
# Test Experience

Nexiilabs has experience in qualifying varied applications and products.

## Manual Testing

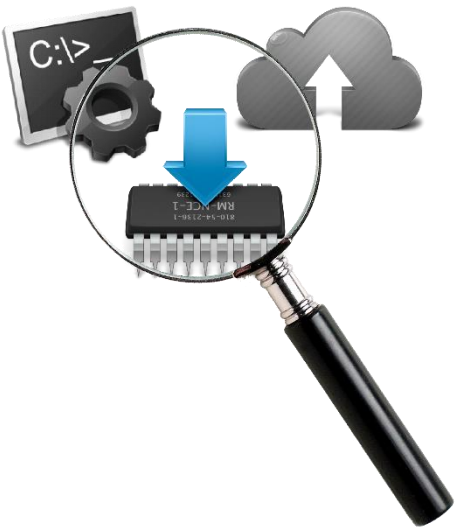


## Automation Testing



# Specialty Testing

- Protocol Testing
  - TCP/IP-based protocols, FC, SCSI, iSCSI, FCoE, NFS, CIFS using packet analyzers, sniffers, jammers, emulators, etc.
- Solutions Testing
  - Qualifying working of different products as a solution.
- Complex Cluster Solutions
- Storage and Server Virtualization Solutions
- Cloud Appliances
- Firmware Testing
- Request for Qualification Testing
- Backup Solutions
- Network Appliances
- Complex Enterprise Web Applications



## Test Execution Models

- SCRUM MODEL  
Nexiilabs has vast experience in running projects in SCRUM model. One of the largest CoE of a customer runs completely in SCRUM.
- WATERFALL MODEL  
Nexiilabs runs some of the QE projects in traditional waterfall model. Some of the small projects depending on customer needs are run using waterfall model.



## Test Tools Expertise

- |                         |                                 |
|-------------------------|---------------------------------|
| <b>Automation Tools</b> | <b>Debugging Tools</b>          |
| QTP                     | Firebug                         |
| Selenium                | GDB                             |
| LoadRunner              | KDB                             |
| <b>Test Management</b>  | IE Dev Tools                    |
| Bugzilla                | <b>Configuration Management</b> |
| Seapine                 | VSS                             |
| Zephyr                  | ClearCase                       |
| QC                      |                                 |
| Trac                    |                                 |
| JIRA                    |                                 |
| Product Studio          |                                 |
| BrowserStack            |                                 |

# Value Add

Nexiilabs has a state-of-the-art Research and Development facility that rolls out innovative solutions to its customers. Using these out-of-the-box solutions, we have triumphed over the immediate challenges that have been plaguing our test environment. These solutions also have worked wonders for our esteemed clients in terms of improving their service and productivity. Following products prove our expertise in testing domain.

**iCATC (Ingenit CA Test Control)** is a tool developed for one of the esteemed customers of Nexiilabs. The product has a complex mesh of multiple features, providers, platforms and browsers.

The combination of all the components creates more than 2 million test cases. With such complicated mesh, it is very difficult to create a test suite and test runs for each release. A lot of test escapes are therefor eminent.

iCATC allows customers to choose various combinations and creates test runs easily. Using the tool, the test planning team is capable of creating test suites for different releases with a minimal, yet optimal, set of test cases.



## Regression Planner:

One of our prestigious clients has CPE team that releases the software patches every quarter.

The planning of the regression tests and verification is a daunting task, as the product development team is scattered, and the planning team therefore has a tough time coordinating with developers, stakeholders and test teams.

Nexiilabs has found an opportunity to create a tool to plan complete testing. The tool has a complete workflow of all the activities, right from identifying the defects for the release, sending them for development to add the regression areas to identifying the test cases, adding the test cases into QC and assigning the tests to the test teams.

These tool features have enabled the customers to reduce test cycle and hence the time to market.



# Nexiilabs Support Matrix

## Hire



- We hire engineers who are highly motivated.
- We hire engineers who fit both technically and culturally.
- Test engineers with sufficient knowledge in testing process, test & debugging skills are only hired.

## Project Management



- Project Managers are not billed.
- Depending on the project size, Project Managers are shared or dedicated.
- Most Project Managers are PMI certified.



## Learning Center

A robust learning process with stringent review and evaluation is fuelling the Nexiilabs' growth story.

- Nexiilabs believes in holistic learning, instead of just training.
- Engineers hired for a specific project undergo a stringent learning, review and evaluation, before getting into customer project. (There are exceptions when customer has any urgent requirement)
- The process consists of learning different modules, hands on exercises (if required by customer), multiple reviews, final evaluation and project induction.



## Bench

- Test engineers with varied skills are part of the bench.
- Bench size varies with the commitments and contracts in hand.
- Bench size also varies from domain to domain.
- Usually 20-30% of billing per domain is maintained.



[www.nexiilabs.com](http://www.nexiilabs.com)

Phone: +9140 48480048

E-mail: [sales@nexiilabs.com](mailto:sales@nexiilabs.com)

### Corporate Office

Nexiilabs Pvt Ltd.  
#105-108, Wing-1,  
Level-1 Block-D,  
Cyber Gateway,  
Madhapur,  
Hyderabad, AP,  
Pin: 500 081. India

### R&D Centre

Unit No: 01-08, 1st  
Floor, Block-  
B, Cyber Pearl,  
Madhapur,  
Hyderabad, AP,  
Pin: 500 081. India

### Nexiilabs Inc.

15 New England  
Executive Park,  
Burlington,  
Massachusetts  
01803 USA.